



Shipping & Mailing

Inserting

Relay™ 1000 inserter

# The easy way to automate mail folding and inserting.





### **Quickly fold, stuff and seal your envelopes.**

Sending invoices, statements, letters and promotions is critical to your business. However, folding paper and stuffing envelopes by hand is an unnecessary waste of time and resources. For consistent, accurate, and dependable results, look to the Relay™ 1000 inserting system.

### **Don't just meet your goals. Exceed them.**

A compact system designed to take the labour out of your hands, the Relay 1000 inserting system helps maximise your time and space wisely. That allows you to focus on what you do best. By automating your mailings, you'll be able to spend your time building your business and delivering value to your customers.

### **With the Relay 1000, you can:**

- Correspond with customers more regularly.
- Add revenue-generating inserts.
- Improve the security of your mail with envelopes that stay sealed.
- Align mailing addresses for a precise fit in envelope windows, to help get your mail to its destination.
- Deliver frequent promotional mailings.



# Relay™ 1000 features



## Envelope feeder

60 envelope capacity also lets you load material on the fly for continuous operation.



## Control panel

The simple interface makes job selection easy. Just press and go.



## Convenience feeder

Give everyday mail a professional look by feeding up to 3-pages stapled or unstapled.



## Sheet feeders

Load up to 80 sheets. A sheet feeder is included. A second sheet feeder is an available option.



## Insert feeder

Add impact to your mail piece with a pre-folded brochure, notice or reply envelope.

# Drive higher performance with the Relay™ 1000 inserting system.

**Productivity:** Automating mail folding and inserting saves time.

**Accuracy:** Eliminate costly delays in mailing due to manual errors.

**Out of the box operation:** Plug it in, load your materials and you're ready to produce.

**Flexible processing:** Invoices, statements, letters, promotions and other correspondence are folded, inserted and securely sealed in envelopes, ready for mailing.

**Versatile:** Automatically fold and insert up to two A4 sized sheets into a DL envelope.

**Drive sales:** Add a promotional insert or reply envelope to your communications to help grow your business.

**Save time and reduce the need for manual labour:** Our system processes 15 pieces per minute and is six times faster than manual processing.

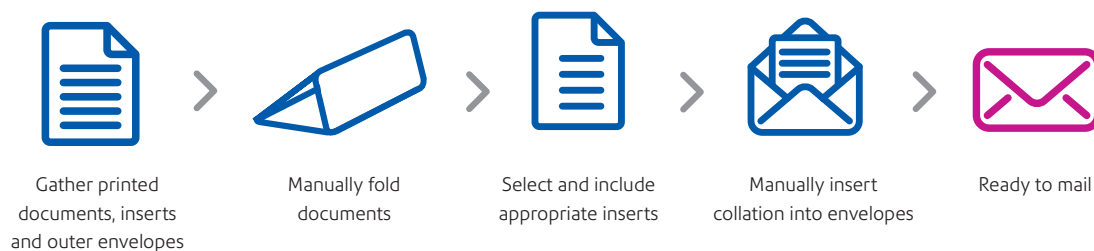
**Speed cash flow:** Invoices get out faster. That means that your payments come back to you sooner.

**Easy to use:** All the controls are right at your fingertips with prompts clearly displayed on the control panel.

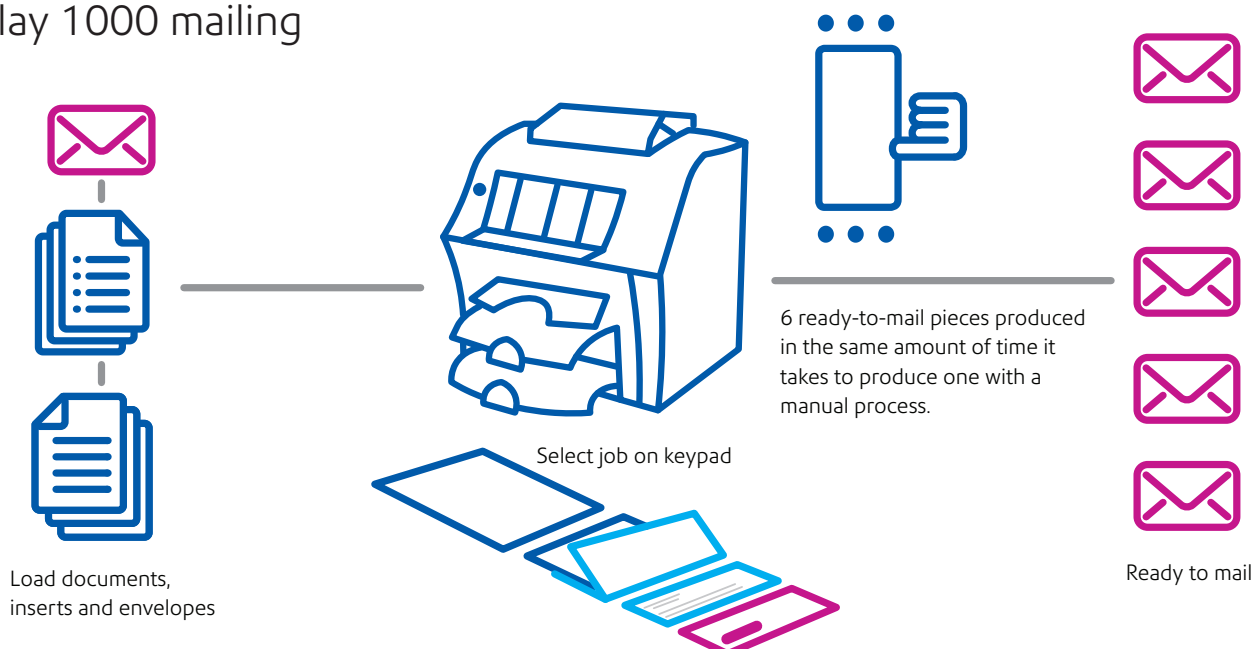
## Notable attributes:

- Insert/fold setting
  - Programmable for fold/insert or fold-only modes
- Double document detection
- Resettable mail piece counter
- Selectable seal or no seal modes

## Traditional mailing



## Relay 1000 mailing



| <b>Specifications</b>                 |   |
|---------------------------------------|---|
| Throughput                            | 900 per hour, up to 15 pieces per minute                                |
| Monthly capacity                      | 4,000   |
| Max number of feeders                 | 3 (2 sheet and 1 insert)  |
| Fold options                          | C, Double   |
| <b>Sheet feeder</b>                   |   |
| Capacity                              | 80 sheets   |
| Paper sizes                           | A4 – 210 mm x 297 mm  |
| Paper weights                         | 75 gsm to 90 gsm  |
| <b>Insert feeder</b>                  |   |
| Capacity                              | 60  |
| Sizes                                 | Width Min: 127 mm, Max: 225 mm<br>Depth Min: 86 mm, Max: 114 mm         |
| Material weight                       | Folded 70 gsm to 90 gsm. Unfolded 70 gsm to 200 gsm                     |
| <b>Convenience feeder</b>             |   |
| Daily mail/manual/convenience feeder  | Up to 3 sheets stapled or unstapled                                     |
| <b>Envelope feeder</b>                |   |
| Capacity                              | 60 envelopes  |
| Sizes                                 | DL: Width: 225-235 mm, Depth: 110-121 mm                                |
| Envelope weights                      | 70-100 gsm  |
| <b>Physical dimensions</b>            |   |
| Width                                 | 440 mm  |
| Depth                                 | 530 mm  |
| Height                                | 365 mm  |
| Height with optional 2nd sheet feeder | 440 mm  |
| Weight                                | 17 kg without optional sheet feeder<br>27 kg with optional sheet feeder |
| Electrical                            | 240 V, 50 Hz, 1 A   |

Relay™ 1000 inserter  
precisely folds, inserts  
and seals up to  
900 pieces per hour.





## **United Kingdom**

Building 5, Trident Place  
Hatfield Business Park  
Mosquito Way  
Hatfield  
Hertfordshire AL10 9UJ  
ukenquiries@pb.com

For more information, call 08444 992 992  
or visit us online: [pitneybowes.com/uk/relayinserters](http://pitneybowes.com/uk/relayinserters)

Pitney Bowes, the Corporate logo, and Relay are trademarks of Pitney Bowes Inc. or a subsidiary.  
All other trademarks are the property of their respective owners.  
© 2016 Pitney Bowes Inc. All rights reserved.