



Speed Forward

A new standard of performance that exceeds your expectations

Digital duplicator

RISO

SF 9350

A3/150 ppm/600 x 600 dpi/Full-color LCD touch panel/
Versatile connectivity

Introducing the SF series, the all-new global brand that meets all kinds of user needs

Employed in over 180 countries and regions, RISO has been successfully meeting all user needs by constantly listening to the feedback from our customers in order to continually improve our products. The SF series is an important milestone and a masterpiece of our ceaseless innovation. With the fastest speed in its class plus the superior operability and print quality, the SF series ushers you into a higher dimension of printing.





High Productivity
150 ppm *High-speed printing*



Simple Operation
New control panel design



High Definition
600 x 600 dpi *High-resolution*



RISO SF 9350

“Since print volume is normally very large, time and costs are major concerns.”



RISO offers outstanding productivity through high speed and low cost.

High-speed 150 ppm printing

Achieving 1000 pages printed in approx. 7 minutes, this is the world's fastest printing speed in this range. This surprisingly rapid rate will efficiently support your heavy paperwork requirements.



Quick Master Making mode **NEW**

A new function, speed priority mode, shortens the master-making time while still maintaining high image quality.

Heavy-load paper feeding

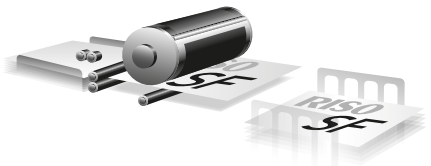
The paper trays have a capacity of 1000 sheets* for both feeding and receiving, which ensures uninterrupted printing over a longer period.



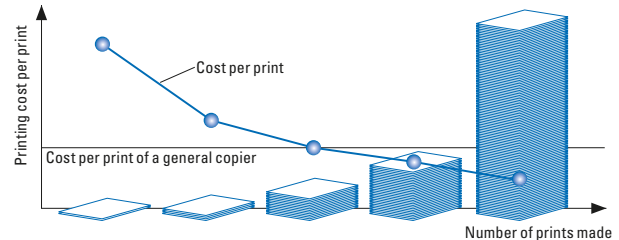
*When using the following weight of paper: 64 gsm to 80 gsm

Overwhelmingly economical print costs

The SF series makes prints from a master. As a result, the more pages generated from each master the lower the cost per print, making it highly economical for medium- to high-volume printing.

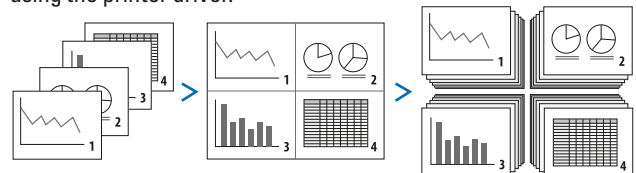


Print quantity and cost per print



Paper saving

Page layout printing combines multiple copies of the same page, or copies of multiple pages onto a single printed page to save paper. Conveniently condense bulky multiple-page documents in an easy-to-read format. These functions are available when using the printer driver.

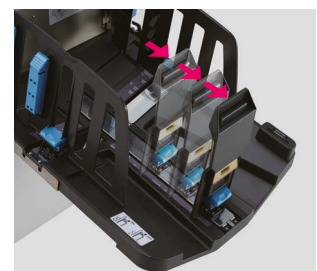


Versatile paper handling capability

The SF series plays multiple roles, accepting a wide range of paper types such as recycled paper, coarse paper, cards and envelopes.

Easily adjustable receiving tray **Improved**

The receiving tray can be adjusted easily with a click feeling for each standard paper size. Improved design allows printed papers to settle in an orderly way for smooth pickup.



“Aren’t digital printers difficult to operate?”

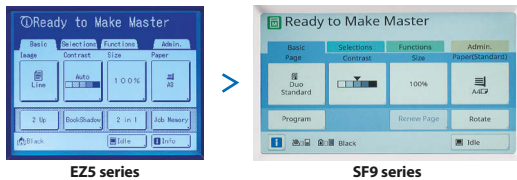
**No need to worry.
Operation is easy for everyone.**

Redesigned control panel **Improved**

New, easy-to-use control panel provides intuitive operation.

7-inch color touch panel display **NEW**

Functions for printing, copying, scanning and managing data are all at your fingertips, logically arranged for intuitive operation on a large 7-inch color LCD touch screen.



Various printing approaches

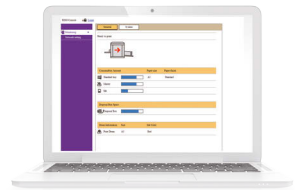
The SF series offers various ways of printing, depending on your specific requirements.

- Standard equipment of PC-I/F
- Direct printing from a USB flash drive
- General SD card compatible for data storage **Improved**



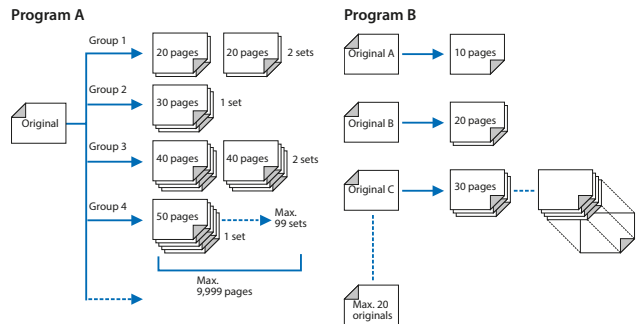
RISO console **NEW**

The total management system improves convenience by integrating applications in one place. Product, consumables and system information can all be checked easily on your PC.



Versatile program print

For example, you can print question papers for three different classes, A, B and C, that contain different numbers of students. Simply set up the program, place the three original tests in the Auto Document Feeder and press “print” — you’ll automatically receive the required numbers of each individual test.



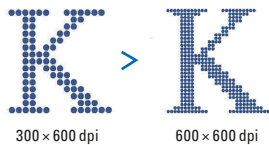
“We don’t want to compromise the beauty of the finish.”

Images and text can be printed with outstanding quality.



High image quality 600 × 600 dpi printing **Improved**

Improved resolution for both scanning and printing. This achieves sharp and clear output with the highest image quality.



Enhanced features for clearer output

High scanning quality **NEW**

The newly designed scanner attains smooth tonal gradation even with photo images.

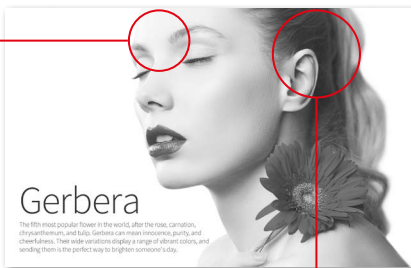
- Reduced blown-out highlights via equalized dot description

Improved image-processing function **Improved**

Decreases image deterioration through improved image processing, delivering clearer output.

- Minimizes blocked-up shadows through enhanced gamma correction
- Sharp outlines with contour enhancement achieved

Reduced blown-out highlights



Minimizes blocked-up shadows

Ink color variations

21 standard colors plus 50 custom colors are available. A wide range of printing colors can meet the needs of a variety of print jobs.

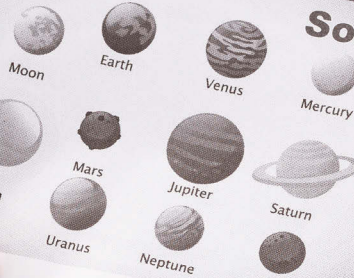
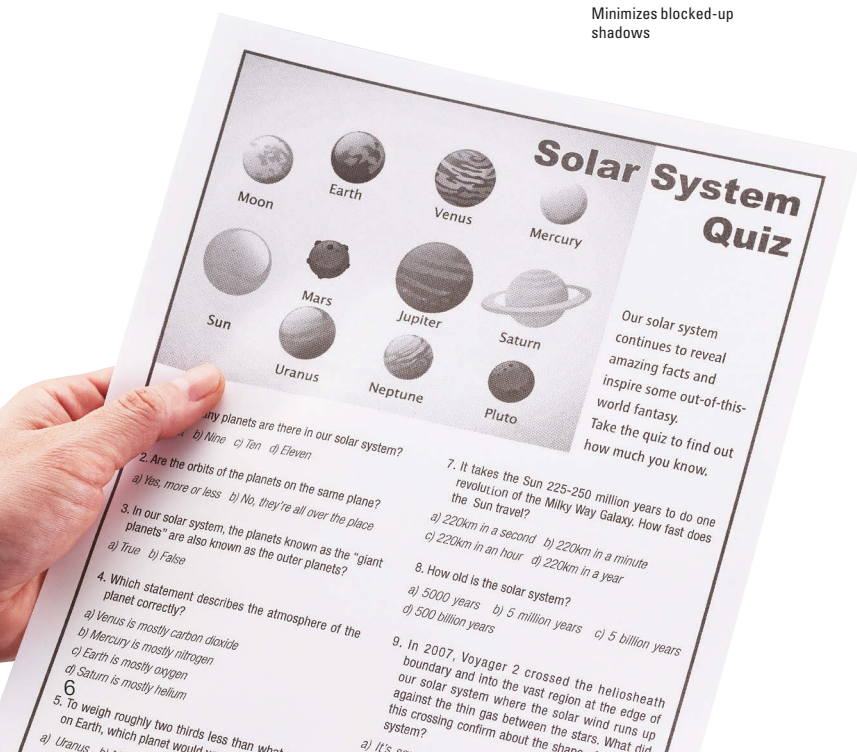
Red	Bright Red	RISO-Marine Red	Burgundy	Brown	Yellow	Green
Teal	Blue	Medium Blue	RISO-Fed. Blue	Purple	Flat Gold	Orange
Crimson	Hunter Green	Gray	Light Gray	Fluorescent Pink	Fluores. Orange	Gold

[Custom colors]



Other various functions for optimum output

- Auto base control
- Tone smooth function
- Four image-processing modes: Line, Photo, Duo, and Pencil



Solar System Quiz

Our solar system continues to reveal amazing facts and inspire some out-of-this-world fantasy. Take the quiz to find out how much you know.

1. How many planets are there in our solar system?
a) Nine b) Ten c) Eleven
2. Are the orbits of the planets on the same plane?
a) Yes, more or less b) No, they're all over the place
3. In our solar system, the planets known as the "giant planets" are also known as the outer planets?
a) True b) False
4. Which statement describes the atmosphere of the planet correctly?
a) Venus is mostly carbon dioxide
b) Mercury is mostly nitrogen
c) Earth is mostly oxygen
d) Saturn is mostly helium
5. To weigh roughly two thirds less than what on Earth, which planet would you want to visit?
a) Uranus b) Neptune c) Saturn d) Jupiter
6. How long does it take for light from the Sun to reach Earth?
a) 8 minutes b) 8 hours c) 8 days d) 8 years
7. It takes the Sun 225-250 million years to do one revolution of the Milky Way Galaxy. How fast does the Sun travel?
a) 220km in a second b) 220km in a minute
c) 220km in an hour d) 220km in a year
8. How old is the solar system?
a) 5000 years b) 5 million years c) 5 billion years
9. In 2007, Voyager 2 crossed the heliosheath boundary and into the vast region at the edge of our solar system where the solar wind runs up against the thin gas between the stars. What did this crossing confirm about the shape of the solar system?
a) It's conical b) It's flat c) It's spherical d) It's irregular

Session Program: 8:45 - 1:45 (Mon. - Fri.) Session 1: June 29 th - July 3 rd - Sunshine Gardens Session 2: July 6 th - July 10 th - Picnic Paradise 1 Session 3: July 13 th - July 17 th - Cold Bunnies Session 4: July 20 th - July 24 th - Toy Club Session 5: July 27 th - July 31 st - Jump in the pool Session 6: August 3 rd - August 7 th - Picnic Paradise 2	Summer School Daily Schedule 8:45 - 9:00 Arrivals & Free Activities 9:00 - 9:30 Circle Time 9:30 - 10:30 Arts & Crafts 10:30 - 10:50 Transition & Snack 10:50 - 11:50 Outdoor/Water Play 11:50 - 12:30 Transition & Lunch 12:30 - 1:30 High Jump/Activity 1:30 - 1:40 Story Time 1:40 - 1:45 Goodbye Circle 1:45 - 1:50 Departures *Activities, meals & resources are subject to change.
---	--



Optional Accessories



RISO SF Drum



RISO Auto Document Feeder VII



Job Separator IV; NIII



Card Feed Kit



RISO Key Card Counter IV; N



RISO Controller IS300



RISO Stand D Type III
Deluxe and with doors for convenient storage with a neat appearance.



RISO Stand N Type III
Sturdy open-front stand also offers convenient storage of consumables.

- IC Card Reader Activation Kit RG
- Wide Stacking Tray
Allows use of paper up to 555 mm in long edge.
- RISO Printer driver for Macintosh

Specifications

Master Making/Printing Methods		High-speed digital master-making/Fully automatic printing
Original Type		Book or sheet
Master Making Time*1	Quick Master Making mode	- Approx. 14 seconds (A4, long-edge feed) - Approx. 18 seconds (A4, short-edge feed)
	Normal master making mode	- Approx. 16 seconds (A4, long-edge feed) - Approx. 20 seconds (A4, short-edge feed)
	Scanning	600 dpi × 600 dpi
Resolution	Printing	600 dpi × 600 dpi, Quick Master Making mode: 600 dpi × 400 dpi
	Maximum Scanning Area	297 mm × 432 mm
Print Paper Weight	46 gsm to 210 gsm	
Print Paper Size*2	100 mm × 148 mm to 310 mm × 432 mm	
Maximum Printing Area	291 mm × 413 mm	
Paper Feed Tray Stacking Capacity	1000 sheets*3, stacking height of 110 mm or lower	
Paper Receiving Tray Stacking Capacity	1000 sheets*3, stacking height of 110 mm or lower	
Print Speed	6 levels: 60, 80, 100, 120, 130, and 150 ppm*4	
Print Position Adjustment	Horizontal: ±15 mm, Vertical: ±10 mm	
Image Processing Mode	Line, Photo (Standard/Portrait), Duo (Standard/Line/Photo), Pencil (Darker/Lighter)	
Print Reproduction Ratio	Zoom (50% to 200%), Free, 100% reduction ratio, Margin+ (90% to 99%), 4 levels of enlargement (163%, 141%, 122%, 116%), 4 levels of reduction (87%, 82%, 71%, 61%)	
User Interface	Color touch panel	
Functions	Image, Contrast, Size, Paper Size Detection, Dot Process, Contrast Adj., Tone Curve, Multi-up Print, Book Shadow, Top Margin Adj., Binding Margin Adj., Max. Scan, Ink Saving, Quick Master Making, Preview, ADF-Semi-Auto*5, Storage, Overlay, Print Speed Adj., Print Density Adj., Print Position Adj., Interval, Renew Page, Auto Page Renewal, Rotate, Special Paper Ctrl, Program, Job Separation*5, Job Memory, Reservation, Editor, Idling Action, Confidential, My Direct Access, Meter Display, ID Counter Report, Proof Copy, Direct Printing, USB Job List, Scanning mode, Admin., Auto Sleep, Auto Power-OFF, Power-OFF Schedule, ECO mode, Protect, RISO iQuality System	
Ink Supply	Full automatic (1000 ml/cartridge)	
Master Supply/Disposal	Full automatic (A3: approx. 220 sheets per roll)/Disposal capacity: approx. 100 sheets	
Power Source	AC 100-240 V, 50-60 Hz <3.4-1.6 A>	
Power Consumption	Standard	Max.: 300 W, Ready: 20 W or lower, Sleep: 5 W or lower, Power-OFF: 0.5 W or lower
	Optional Accessories Connected*6	Max.: 315 W, Ready: 30 W or lower, Sleep: 10 W or lower, Power-OFF: 0.5 W or lower
Dimensions (W×D×H)	In use	1415 mm × 670 mm*7 × 1065 mm*8
	In storage	780 mm × 670 mm*7 × 1065 mm*8
Required Space (W×D×H)	1415 mm × 1240 mm × 1515 mm*8	
Weight	102 kg*9	
Safety Information	IEC-60950-1 compliant, indoor, pollution degree 2*10, at altitudes of 2000 m or lower	

*1 Measurement value when set to 100% reproduction ratio.

*2 When the optional Wide Stacking Tray is installed, you can use paper up to a size of 310 mm × 555 mm by setting [Custom Paper Entry].

*3 When using the following weight of paper: 64 gsm to 80 gsm

*4 If the temperature of the inside of the print drum (cylinder) is less than 15°C, [150 ppm] is not usable.

*5 Optional accessories required.

*6 When all the following optional accessories are installed, Auto Document Feeder, Job Separator, Key/Card Counter.

*7 The depth does not include the stabilizers for the stand.

*8 The height includes the stand.

*9 The weight does not include the ink, master roll, and stand.

*10 The pollution degree of the usage environment due to dirt and dust in the air. Degree "2" corresponds to a general indoor environment.

Notes: The specifications are subject to change without prior notice.

RISO iQualitySystem™



The RISO i Quality mark indicates a RISO product compatible with the RISO i Quality System.



RISO INK F Type Color (1000 ml)



RISO MASTER F Type
(A3: 220 sheets)



RISO INK F Type (1000 ml)

and RISO are trademarks or registered trademarks of RISO KAGAKU CORPORATION in the United States and other countries.

RISO iQualitySystem™ and are the trademarks of RISO KAGAKU CORPORATION.

Other corporate names and/or trademarks are either registered trademarks or trademarks of each company, respectively.

Copyright ©2016 RISO KAGAKU CORPORATION. All rights reserved.



RISO KAGAKU CORPORATION

5-34-7 Shiba, Minato-ku, Tokyo 108-8385 Japan

<http://www.riso.com/>

For more details please contact: